

CRAZY HEART PILLOW



PROJECT SUPPLIES

- 5 fabric scraps approximately 2½" x 5"
- 3 fabric scraps approximately 3¼" x 6"
- (1) 10" square for pillow top backing
- (1) 10" square for pillow back
- (1) 10" square of batting
- Fiberfill

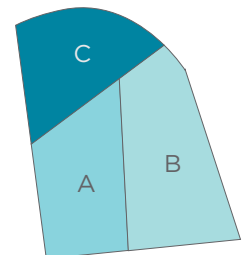
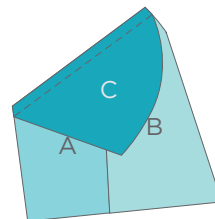
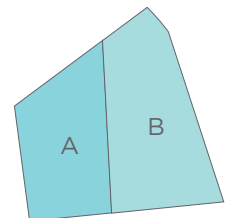
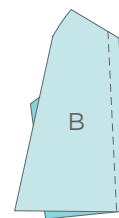
Crazy Heart Pillow Top

Print the template shapes at 100% and cut out each shape. Set the large half-heart template aside for the pillow back. Carefully trace each of the templates A, B, C, D, and F on different 2½" x 5" scraps, right side up, then cut around the traced shape. In the same manner, trace and cut around templates E, G, and H on different 3¼" x 6" scraps.

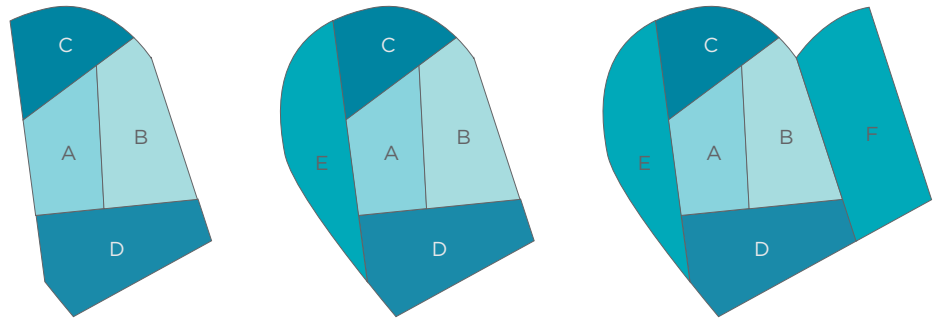
Hint: Keep the paper template with the cut piece to remember which letter is assigned to that piece.

Lay piece B atop piece A right sides together, as shown. Using a ¼" seam allowance, sew along the matched edges. Press towards piece B.

Lay piece C atop the sewn unit with right sides together, as shown. Sew along the matched edges. Press towards C.

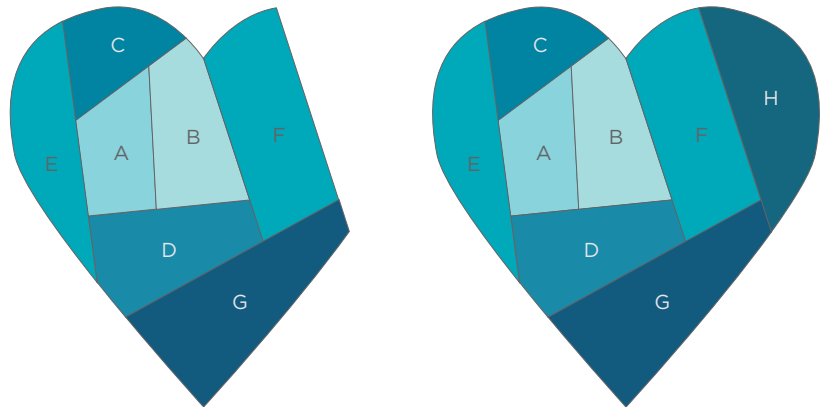


Continue in this same manner to add pieces D-H, pressing towards each new piece after it is added.



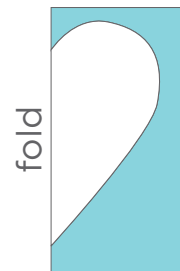
Layer the pieced heart with the batting and pillow top backing and quilt as desired.

Note: This is a fun time to try out all those fancy stitches on your machine!



Making the Pillow

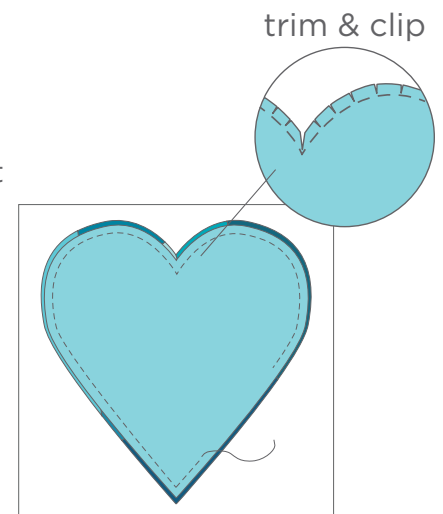
Fold the pillow backing square in half and lay the half-heart template on top with the straight edge against the fold. Carefully trace, then cut the fabric while keeping it folded. Open to reveal a full heart.

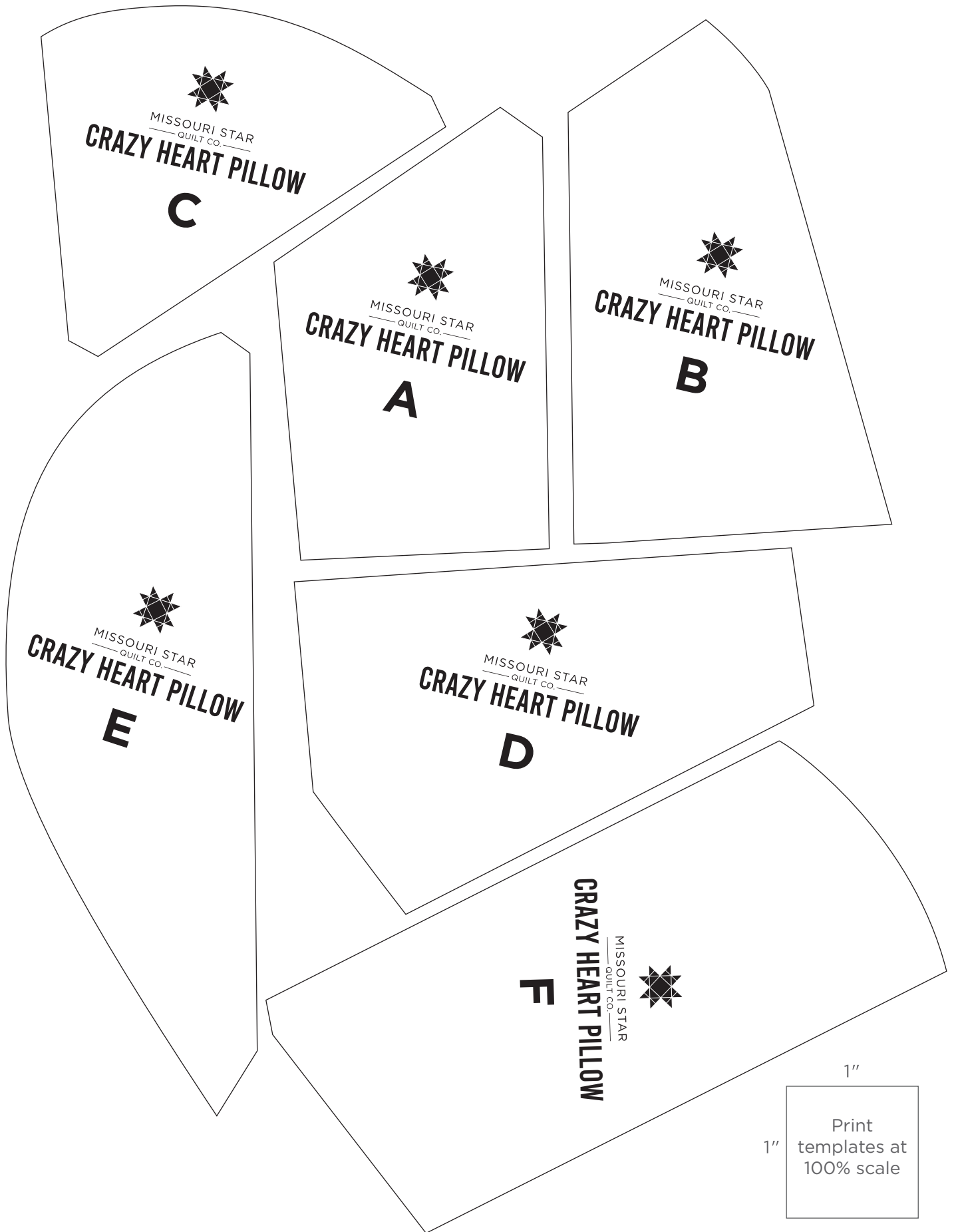


Lay the pillow back heart, right sides together, with your quilted crazy heart top and pin. Sew the top and back together along the edges of the pillow back heart using a $\frac{3}{8}$ " seam. Backstitch at the beginning and end, leaving a 4" opening for turning.

Carefully trim the edges $\frac{1}{4}$ " from your seam line. Trim the bottom point of the heart close to the seam line to reduce the bulk. Clip the seam allowance at the top point of the heart and along the curved edges to ease the fabric when it is turned. Be sure to clip close to but not through the seam line.

Turn the pillow right side out and push out the points and curves. Stuff the pillow with fiberfill and whipstitch the opening closed.







MISSOURI STAR
QUILT CO.

CRAZY HEART PILLOW PILLOW BACK



MISSOURI STAR
QUILT CO.

CRAZY HEART PILLOW
G



MISSOURI STAR
QUILT CO.

CRAZY HEART PILLOW
H

1"

1"

Print
templates at
100% scale