



Author: Dawn Refsell

Falls Quilt made with Kona Solids Jelly Roll & Charm Pack



Fabric Requirements:

1 Kona Solids Jelly Roll

1 Kona Brights Charm Pack

1 1/4 yd Kona black for inner and outer border

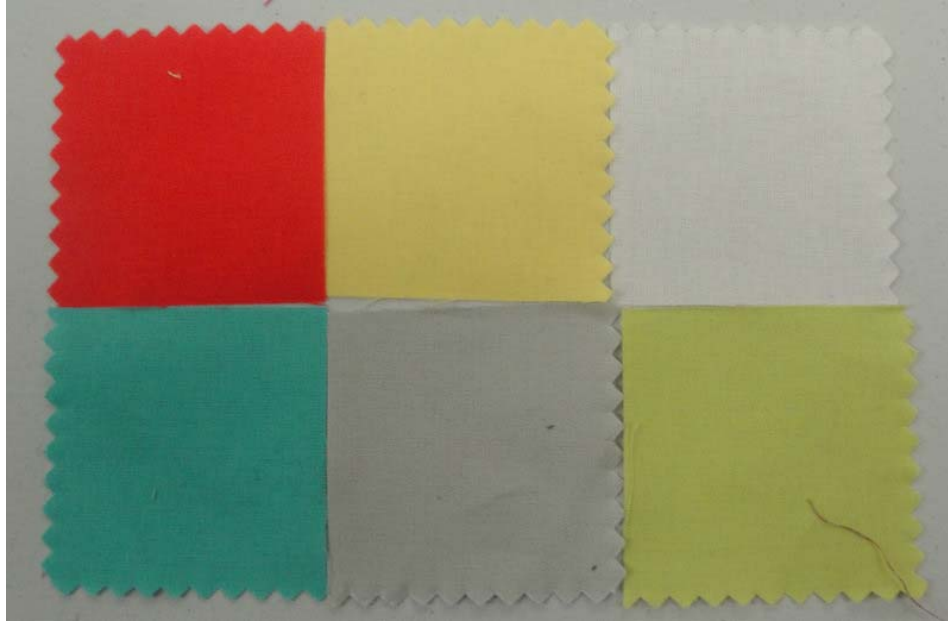
5 yds backing

This is a “LEAVE NO SCRAP BEHIND” Quilt- I have made every attempt to use all fabric with little leftovers. (see below)



1. Sort Kona Jelly Roll into piles of 4 coordinating fabrics to total 12 “blocks”. They will coordinate and range from a light to dark shade. There will be 6 squares from the charm pack that will need to be incorporated into the blocks. I used these 6 below, but feel free to arrange your colors as you like. I went from light centers to dark outside, but the pattern can be reversed just as easy.





2. Once you have the 12 “blocks” sorted, you must identify the light, medium light, medium, and dark fabric in each pile. The charm square can only be designated as the light fabric. One of the blocks will also be made into the three cornerstones of the quilt, so be sure to identify this fabric before cutting. I used the darkest block assortment to anchor my corners. Set the cornerstone fabric aside.

3. From the rest of the strips cut and keep sorted for assembly:

LIGHT (including charm squares):

(1) 2 ½” x 2 ½” square, (1) 2 ½” x 4 ½” rectangle

MEDIUM-LIGHT:

(1) 2 ½” x 8 ½” rectangle, (1) 2 ½” x 4 ½” rectangle, (3) 2 ½” x 2 ½” squares

MEDIUM:

(1) 2 ½” x 12 ½” rectangle, (1) 2 ½” x 6 ½” rectangle, (3) 2 ½” x 4 ½” rectangles

DARK:

(1) 2 ½” x 8 ½” rectangle, (3) 2 ½” x 6 ½” rectangles, (1) 2 ½” x 16 ½” rectangle*

*In many cases I did not cut this piece. I left the rest of the strip as is and pieced then trimmed to the end of the block. The cuts for the dark fabric leave almost nothing behind.

4. To make quarter block, select sew light 2 ½” x 2 ½” square to medium-light 2 ½” x 2 ½” square.
5. Add medium-light 2 ½” x 4 ½” rectangle to first two squares (follow orientation in Figure 1).
6. Add medium 2 ½” x 4 ½” rectangle, followed by the medium 2 ½” x 6 ½” rectangle.
7. Add dark 2 ½” x 6 ½” rectangle, followed by 2 ½” x 8 ½” rectangle.
8. Continue with the same colors and assemble the half block.
9. Sew medium-light 2 ½” x 2 ½” squares to the end of the light 2 ½” x 4 ½” square.

10. Add medium-light $2\frac{1}{2}$ " x $8\frac{1}{2}$ " rectangle to first three blocks (follow orientation in Figure 2).
11. Add medium $2\frac{1}{2}$ " x $4\frac{1}{2}$ " rectangles to both sides, followed by the medium $2\frac{1}{2}$ " x $12\frac{1}{2}$ " rectangle.
12. Add dark $2\frac{1}{2}$ " x $6\frac{1}{2}$ " rectangle, followed by dark $2\frac{1}{2}$ x $16\frac{1}{2}$ " rectangle.
13. From the cornerstone fabric cut:
 - LIGHT:
 - (3) $2\frac{1}{2}$ " x $2\frac{1}{2}$ " squares
 - MEDIUM-LIGHT:
 - (3) $2\frac{1}{2}$ " x $4\frac{1}{2}$ " rectangles, (3) $2\frac{1}{2}$ " x $2\frac{1}{2}$ " squares
 - MEDIUM:
 - (3) $2\frac{1}{2}$ " x $6\frac{1}{2}$ " rectangles, (3) $2\frac{1}{2}$ " x $4\frac{1}{2}$ " rectangles
 - DARK:
 - (3) $2\frac{1}{2}$ " x $6\frac{1}{2}$ " rectangles, (3) $2\frac{1}{2}$ " x $8\frac{1}{2}$ " rectangles
14. To make cornerstone blocks, select sew light $2\frac{1}{2}$ " x $2\frac{1}{2}$ " square to medium-light $2\frac{1}{2}$ " x $2\frac{1}{2}$ " square.
15. Add medium-light $2\frac{1}{2}$ " x $4\frac{1}{2}$ " rectangle to first two squares (follow orientation in Figure 1).
16. Add medium $2\frac{1}{2}$ " x $4\frac{1}{2}$ " rectangle, followed by the medium $2\frac{1}{2}$ " x $6\frac{1}{2}$ " rectangle.
17. Add dark $2\frac{1}{2}$ " x $6\frac{1}{2}$ " rectangle, followed by $2\frac{1}{2}$ x $8\frac{1}{2}$ " rectangle.
18. Repeat to make 3 cornerstone blocks.
19. Lay blocks out keeping a seam between the rows (see below). Assemble blocks in the rows before assembling vertically.



20. From the black, cut five, 4 ½" x WOF strips. Attach as first border around quilt.
21. From leftover charm squares, cut in half to make a total of (122) 2 ½ x 5 rectangles. There will not be enough rectangles from the charm squares alone, so to create the rest of the rectangles stack the leftover scrap from the jelly roll on top from longest to shortest in length. Using the longer strips, cut 2 1/2" x 5" rectangles to add up to the total of 122. *Goal is to even them out to approximately the same length. These will be used for the binding.
22. Assemble into two strips of 28 rectangles and two strips of 33 rectangles. Attach to the inner black border.
23. From the remaining black fabric, cut six 2 ½" x WOF strips and attach as outer border.
24. The remaining colored strips piece together to make the binding.



Half Block

Dark 2 ½ x 16 ½					
Dark 2 ½ x 6 ½	Medium 2 ½ x 12 ½				Dark 2 ½ x 6 ½
	Medium 2 ½ x 4 ½	Med - Light 2 ½ x 8 ½		Medium 2 ½ x 4 ½	
	Med - Light 2 ½ x 2 ½	Light 2 ½ x 4 ½	Med - Light 2 ½ x 2 ½		

Quarter Block

Dark 2 ½ x 8 ½	Dark 2 ½ x 6 ½		
	Medium 2 ½ x 6 ½	Medium 2 ½ x 4 ½	
		Med - Light 2 ½ x 4 ½	Med - Light 2 ½ x 2 ½
			Light 2 ½ x 2 ½